

# 57STH Series

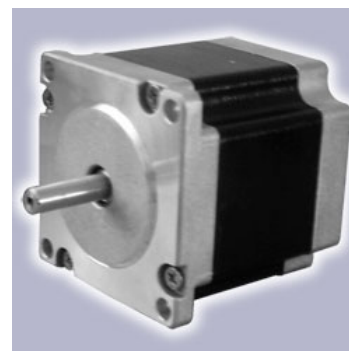
## 57mm 1.8° High Torque Hybrid Stepping Motor

### Technical Specifications:

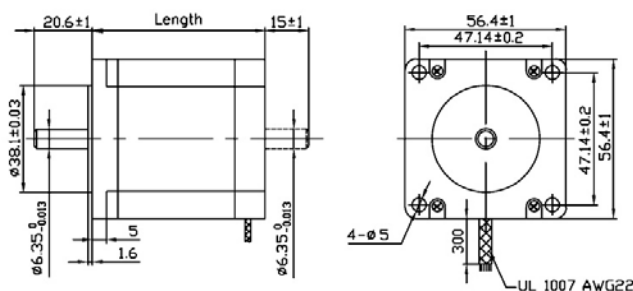
Model No.		Rated Voltage	Current /Phase	Resistance /Phase	Inductance /Phase	Holding Torque	# of Leads	Rotor Inertia	Weight	Detent Torque	Length
Single Shaft	Double Shaft	V	A	Ω	mH	kg-cm		g-cm <sup>2</sup>	kg	kg-cm	mm
57STH41-1006A	57STH41-1006B	5.7	1	5.7	5.4	3.9	6	120	0.45	0.21	41
57STH41-2006A	57STH41-2006B	2.8	2	1.4	1.4						
57STH41-3006A	57STH41-3006B	1.9	3	0.63	0.6						
57STH41-2804A	57STH41-2804B	2	2.8	0.7	1.4	5.5	4	275	0.65	0.36	51
57STH51-1006A	57STH51-1006B	6.6	1	6.6	8.2	7.2	6				
57STH51-2006A	57STH51-2006B	3.3	2	1.65	2.2						
57STH51-3006A	57STH51-3006B	2.2	3	0.74	0.9						
57STH51-2804A	57STH51-2804B	2.3	2.8	0.83	2.2	10.1	4	300	0.7	0.4	56
57STH56-1006A	57STH56-1006B	7.4	1	7.4	10	9.0	6				
57STH56-2006A	57STH56-2006B	3.6	2	1.8	2.5						
57STH56-3006A	57STH56-3006B	2.3	3	0.75	1.1						
57STH56-2804A	57STH56-2804B	2.5	2.8	0.9	2.5	12.6	4	480	1	0.68	76
57STH76-1006A	57STH76-1006B	8.6	1	8.6	14	13.5	6				
57STH76-2006A	57STH76-2006B	4.5	2	2.25	3.6						
57STH76-3006A	57STH76-3006B	3	3	1	1.6						
57STH76-2804A	57STH76-2804B	3.2	2.8	1.13	3.6	18.9	4				

### General Specifications:

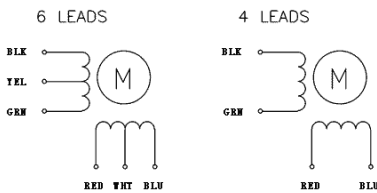
Item	Specifications
Step Angle	1.8°
Step Angle Accuracy	±5% (full step, no load)
Resistance Accuracy	±10%
Inductance Accuracy	±20%
Temperature Rise	80°C Max. (rated current, 2 phase on)
Ambient Temperature	-20°C ~ +50°C
Insulation Resistance	100MΩ Min., 500VDC
Dielectric Strength	500VAC for one minute
Shaft Radial Play	0.02 Max. (450g-load)
Shaft Axial Play	0.08 Max. (450g-load)
Max. radial force	75N (20mm from the Flange )
Max. axial force	15N
Rotation	CW (facing the front flange)



### Dimensional Drawing (mm)



## Wiring Diagram



## Pull out torque

