

Prusa Mendel documentation

ThingDOC.py

March 29, 2011

Prusa Mendel is machine from RepRap project. RepRap is open source 3D printer.

Contents

1	Bill of materials	3
1.1	Printed	3
1.2	Nuts&bolts	3
2	Things overview	4
2.1	Frame vertex	4
2.2	Frame vertex	4
2.3	Frame	4
2.4	Y motor bracket	4
2.5	Belt clamp	4
2.6	Bar clamp	5
2.7	Frame vertex with foot	5
2.8	Frame vertex with foot	5
2.9	Z motor mount	5
2.10	X end idler	5
2.11	Endstop holder	6
2.12	Rod clamp	6
2.13	Bushing	6
2.14	Bushing	6
2.15	X carriage	6
2.16	Pulley	6
2.17	Coupling	7
2.18	X end motor	7
3	Assembly Instructions	8
3.1	Assemble Prusa Mendel	8

1 Bill of materials

List of things you need to build the machine divided by categories

1.1 Printed

- 8x Bar clamp
- 4x Belt clamp
- 2x Coupling
- 3x Endstop holder
- 2x Frame vertex
- 4x Frame vertex with foot
- 2x Frame vertex
- 4x Frame vertex with foot
- 8x Bushing
- 8x Bushing
- 2x Pulley
- 2x Rod clamp
- 1x X carriage
- 1x X end idler
- 1x X end motor
- 1x Y motor bracket
- 2x Z motor mount

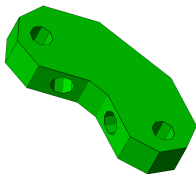
1.2 Nuts&bolts

- 72x M8 nut
- 68x M8 washer
- 2x M8 spring
- 19x M3 nut
- 25x M3 washer
- 17x M3 10mm screw
- 3x M3 20mm screw
- 6x M3 25mm screw

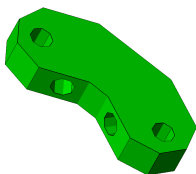
2 Things overview

List of things and their descriptions

2.1 Frame vertex



2.2 Frame vertex



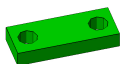
2.3 Frame

Frame for adding all of the other parts

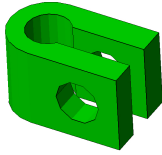
2.4 Y motor bracket



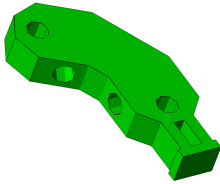
2.5 Belt clamp



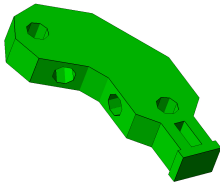
2.6 Bar clamp



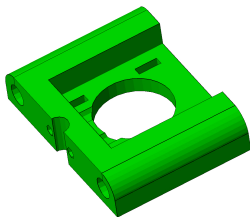
2.7 Frame vertex with foot



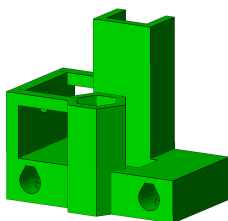
2.8 Frame vertex with foot



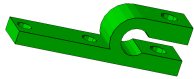
2.9 Z motor mount



2.10 X end idler



2.11 Endstop holder



2.12 Rod clamp

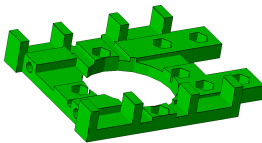


2.13 Bushing

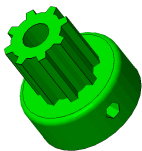
2.14 Bushing

2.15 X carriage

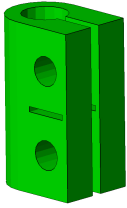
Slides on the x-axis with extruder.



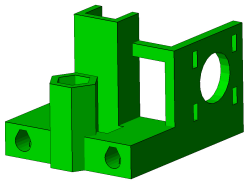
2.16 Pulley



2.17 Coupling



2.18 X end motor



3 Assembly Instructions

Instructions to assemble the machine

3.1 Assemble Prusa Mendel

- Assembly info