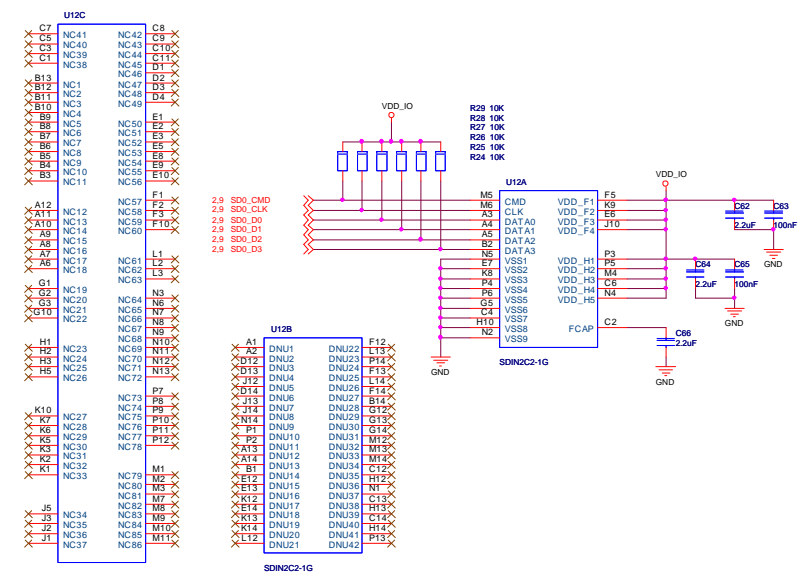
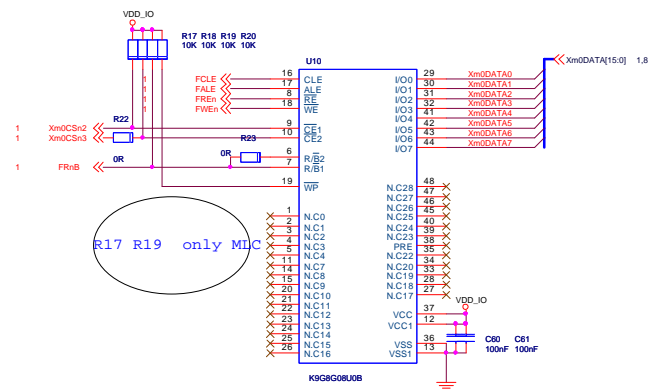
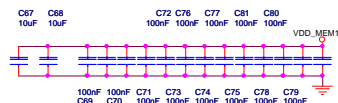
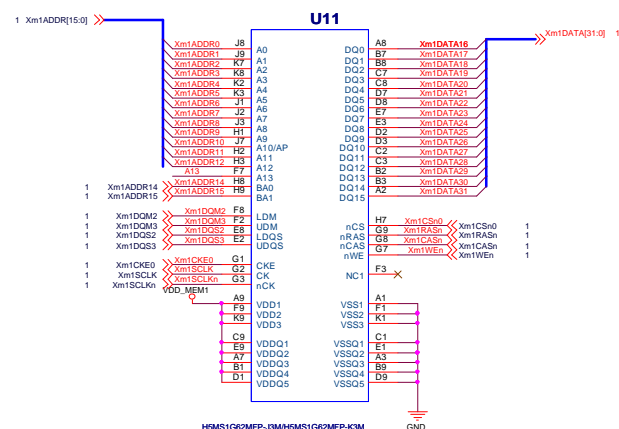
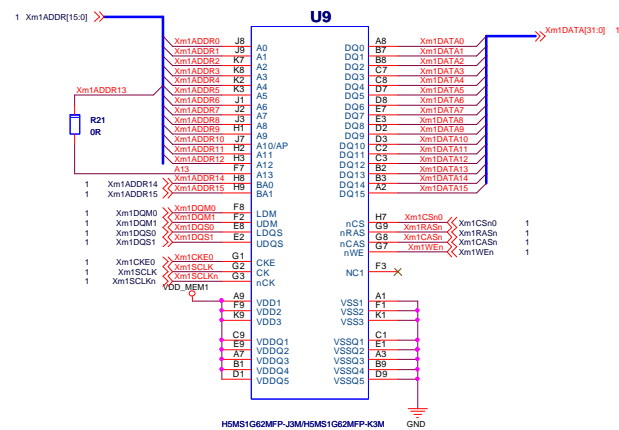
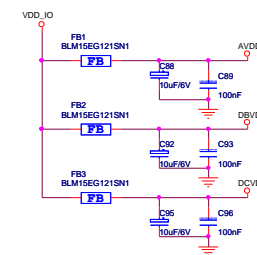
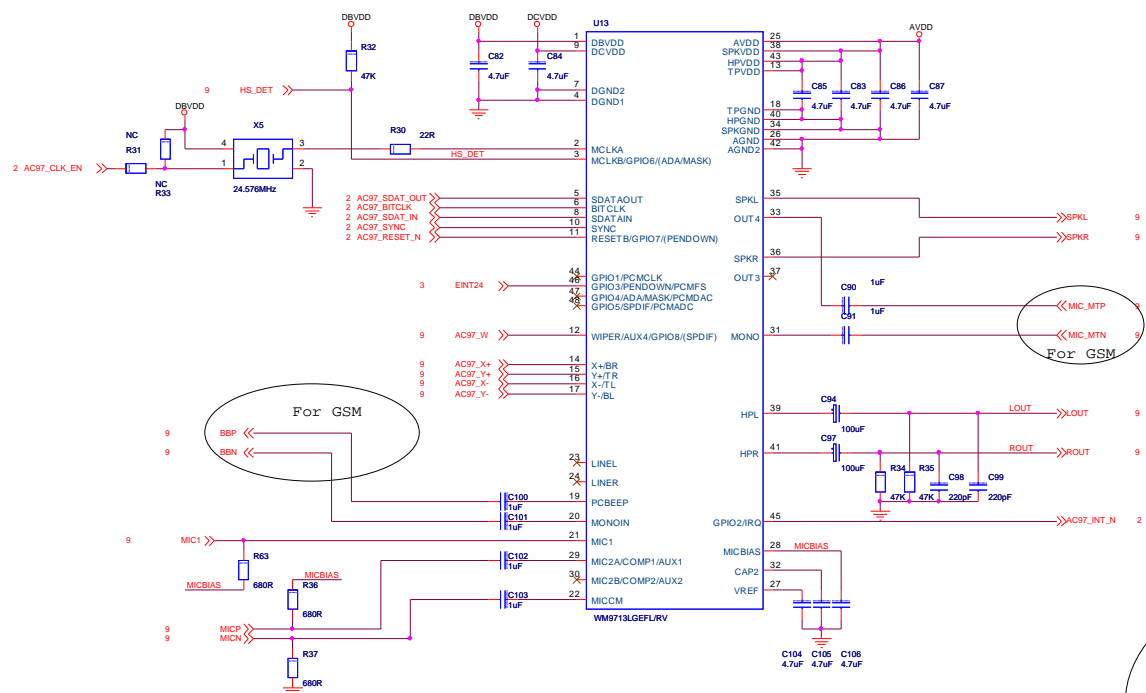


Title <Title>		
Size C	Document Number <Doc>	Rev <RevCode>
Date: Wednesday, July 01, 2009	Sheet 4 of 9	

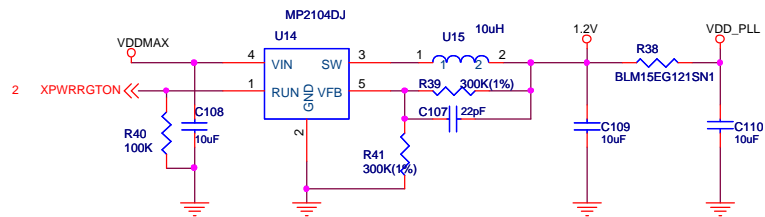


Title			
<Title>			
Size	Document Number		Rev
C	<Doc>		<RevCode>
Date:	Wednesday, July 01, 2009		Sheet 5 of 9

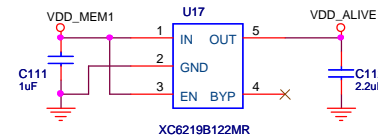


音频模拟信号，注意加粗信号线

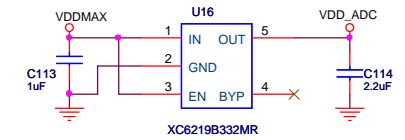
File	<Title>	Rev
Size	Document Number	
C	<Doc>	
Date	Wednesday, July 01, 2009	Sheet 6 of 9



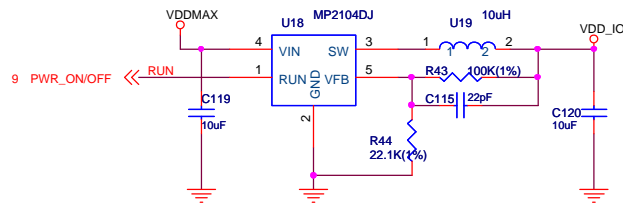
1.2V for PLL INT ARM and OTGI



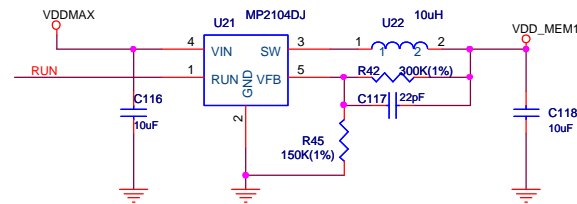
1.2V for ALIVE



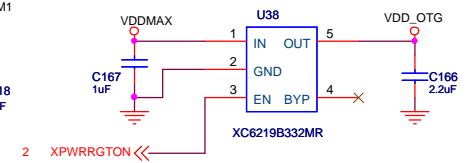
3.3V FOR ADC or DAC



3.3V FOR SYSTEM

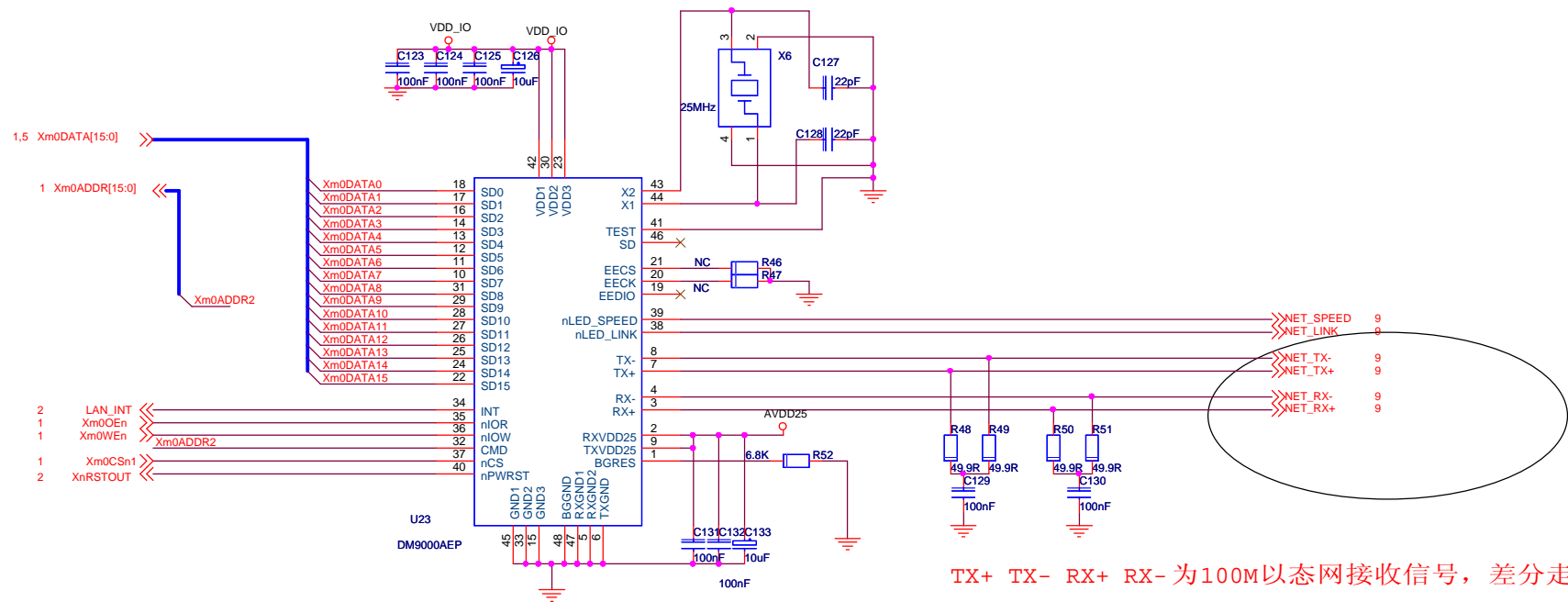


1.8V for mobile DDR



电源和LDO布线，注意线宽线距

Title		
<Title>		
Size	Document Number	Rev
B	<Doc>	<Rev Code>
Date:	Wednesday, July 01, 2009	Sheet 7 of 9



Title			<Title>
Size	Document Number		Rev
B	<Doc>		<RevCode>
Date:	Wednesday, July 01, 2009	Sheet	8 of 9

170PIN引脚可成组内调节，也可组内任意调节，EINT信号可任意调节

