

## “LAN-MATE” SERIES

### SINGLE RJ45 CONNECTOR MODULE WITH INTEGRATED 10/100 BASE-TX MAGNETICS AND LEDS

P/N: LU1T516-43

Page : 1/2

#### Feature



- RJ-45 connector integrated with X'FMR /Impedance resistor/High voltage capacitor .
- Size same as RJ-45 connector to save PCB Board space.
- Reduce EMI radiation, Improve EMI performance.
- Design for 100 BASE transmission over UTP-5 cable.
- Operating temperature range: 0℃ to +70℃.
- Storage temperature range: -25℃ to +85℃
- Recommended panel

Part Number	Standard LED	Forward*V(Max)	(TYP)
3	YELLOW	2.6V	2.1V
4	GREEN	2.6V	2.2V

\*with a forward current of 20mA

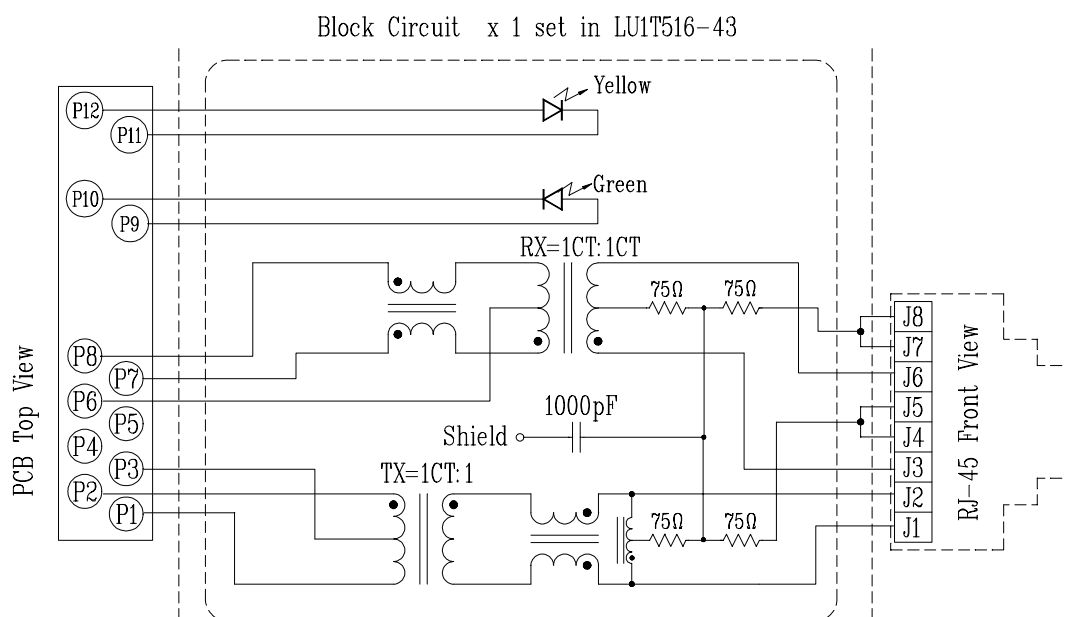
#### Electrical Specifications @ 25°C

Part Number	Turns Ratio (±5%)		OCL (uH Min) @ 100 KHz/0.1V with 8mA DC Bias	C <sub>w/w</sub> (pF Max)	L.L (uH Max)	Rise Time 10-90% (nS Typ)	HI-POT (Vrms)
	TX	RX					
LU1T516-43	1CT:1	1CT:1CT	350	28	0.4	2.5	1500

#### Continue

Part Number	Insertion Loss (dB Max)	Return Loss (dB Min)					Cross talk (dB Min)TX/RX		CMR (dB Min)TX/RX	
	0.3-100MHz	30MHz	40MHz	50MHz	60MHz	80MHz	0.3-60MHz	60-100MHz	1-60MHz	60-125MHz
LU1T516-43	-1.15	-16	-14	-13.5	-13	-10	-45	-35	-37/-35	-33/-28

#### Schematic



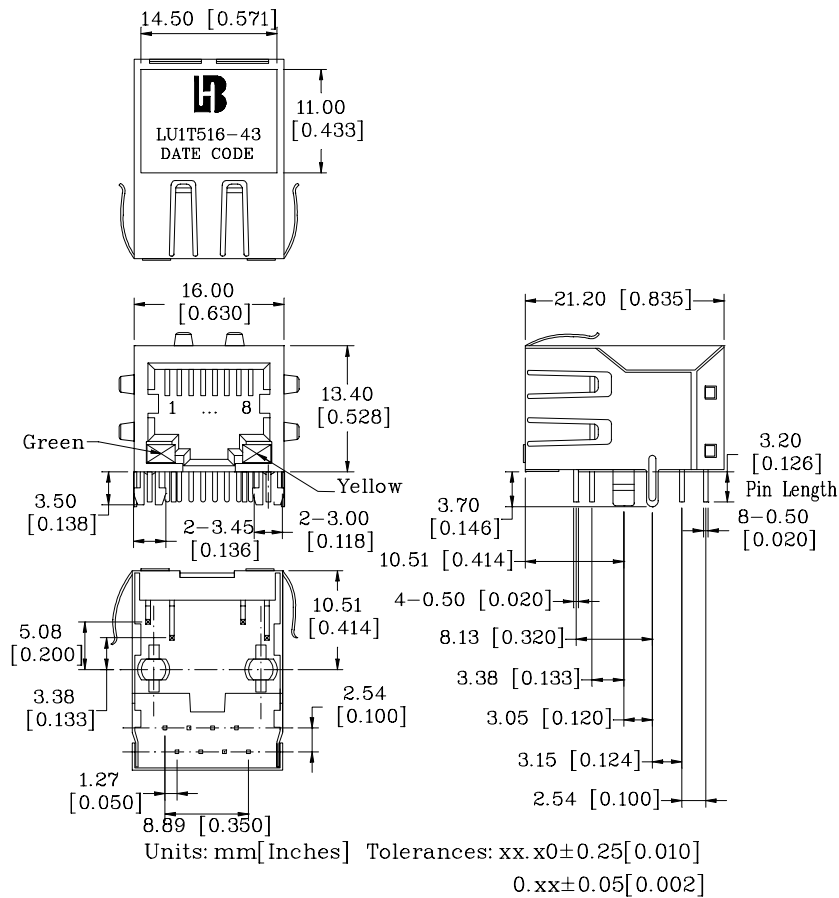
## “LAN-MATE” SERIES

### SINGLE RJ45 CONNECTOR MODULE WITH INTEGRATED 10/100 BASE-TX MAGNETICS AND LEDS

P/N: LU1T516-43

Page : 2/2

#### Mechanical



1. Plastic Material : PBT 15% Glass Filled(UL 94V-0), Black Housing
2. Metal Shield : Brass C2680-H, 20u Nickel Plated, t=0.25mm
3. Spring Wire : 0.45mm Dia. Phosphor bronze with 6u gold plated
4. Solder Pin : 0.4x0.4mm, Phosphor bronze with solder Plated
5. Durability : 300 Mating cycles Min.

#### PCB Layout Mounting Hole(Top View)

