
HC08 Welcome Kit

Hardware-
Version 2.01

User Manual

June 12 2002

Copyright (C)2000-2002 by
MCT Elektronikladen GbR
Hohe Str. 9-13 D-04107 Leipzig
Telefon: +49-(0)341-2118354
Fax: +49-(0)341-2118355
Email: mct@elektronikladen.de
Web: <http://www.elektronikladen.de/mct>

This manual and the product described herein were designed carefully by the manufacturer. We have made every effort to avoid mistakes but we cannot guarantee that it is 100% free of errors.

The manufacturer's entire liability and your exclusive remedy shall be, at the manufacturer's option, return of the price paid or repair or replacement of the product. The manufacturer disclaims all other warranties, either expressed or implied, including but not limited to implied warranties of merchantability and fitness for a particular purpose, with respect to the product including accompanying written material, hardware, and firmware.

In no event shall the manufacturer or its supplier be liable for any damages whatsoever (including, without limitation, damages for loss of business profits, business interruption, loss of business information, or other pecuniary loss) arising out of the use of or inability to use the product, even if the manufacturer has been advised of the possibility of such damages. The product is not designed, intended or authorized for use in applications in which the failure of the product could create a situation where personal injury or death may occur. Should you use the product for any such unintended or unauthorized application, you shall indemnify and hold the manufacturer and its suppliers harmless against all claims, even if such claim alleges that the manufacturer was negligent regarding the design or implementation of the product.

Product features and prices may change without notice.

All trademarks are property of their respective holders.

Contents

1. Overview	3
Technical Data	3
Package Contents	4
2. Quick Start	5
3. Circuit Description	7
Schematic Diagram	7
Controller Core and Input/Output	7
Clock Generation	8
Monitor Mode Interface	8
User RS232 Port	10
Power Supply	10
4. Parts Location Diagram	11
Parts List	12
5. Jumpers and Solder Bridges	14
Jumpers	14
Solder Bridges	14
6. Connectors	16
7. Memory Map	19
8. Application Hints	20
Startup-Code	20
PLL Initialization	20
Additional Information on the Web	21
HC08 Development Tools	21

1. Overview

The HC08 Welcome Kit provides you with a small microcontroller board that helps to evaluate the Motorola MC68HC908GP32. It is a cost-effective, off-the-shelf solution which provides a stable hardware platform for starting an HC08 application development.

The competitive price and the compact size of the evaluation board make it ideal also for low- to mid-volume series applications.

A comprehensive range of development tools (debuggers, assemblers, C compilers) are available to help making software development for the HC08 an easy process.

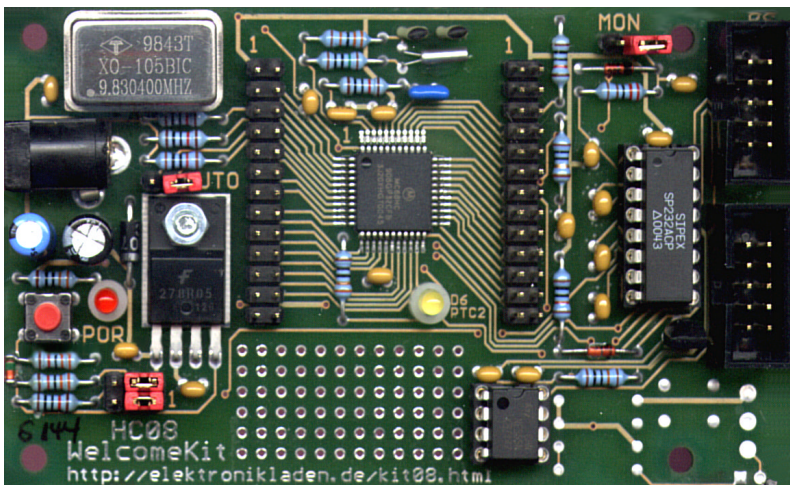
Technical Data

- Motorola MC68HC908GP32 8-bit Microcontroller (QFP44) package, with up to 33 I/O-Pins
- 9.8304 MHz Oscillator (removable, socketed), Bus Clock up to 8 MHz
- alternatively: PLL-based clock generation with 32 kHz Crystal
- 32 KB Flash Memory, 512 Byte RAM
- SPI - synchronous serial interface
- 4x 16-Bit Timer (Input Capture/Output Compare/PWM)
- 8 Channel 8-Bit A/D-Converter
- all I/O-Lines are available via header connectors on the board
- Monitor Mode Interface for In-System Programming (ISP)
- Advanced features: Remote Power-Cycle and Remote Break make debugging much easier
- Serial Interface including RS232 driver to connect a PC or a serial LCD
- Indicator LED
- 5V On-Board Voltage Regulator and connector for Wall Power-Plug

- Reset push button (Power-On Reset)
- Wire-wrap area 6x12
- compact size: 100mm x 60mm (approx. 4" x 2.4")

Package Contents

- Evaluation Board with HC908GP32
- RS232 Cable (Sub-D9)
- 9.8304 MHz canned oscillator
- integrated High-Speed Flash Loader FL08
- User manual (this document), schematic diagram



HC08 Welcome Kit V2.0

2. Quick Start

Nobody likes to read big manuals. For that reason we will summarize the most important things in the following section. If you need additional information, please refer to the more detailed sections of this manual.

Here is how you can start:

- Please check the board for any shipping damage
- Check the Jumpers: the default position of JP1 (MON) and JP2 (AUTO) is open, JP3 (VENA) and JP4 (RRST) must be in position 1-2
- Check the solder bridges: factory default for BR1 and BR2 is position 1-2, BR3 is open, BR4 and BR5 are closed
- Connect the Controller Module via RS232 to a PC. The connection between the HC08 Welcome Kit (connector X3) and the PC is simply made using the included flat ribbon cable.
- Start a terminal program on the PC. An easy-to-use terminal program is OC-Console which is available at no charge from our Website!
- Select a communication speed of 115200 Baud. Disable all hardware or software protocols. Activate the *-handshaking (the terminal must wait for the character "*" before sending another S-Record line)
- Connect a Power supply of 8 to 12 VDC to X1 (central pin carries +5V, GND outside)
- Now FL08 will start, a High-Speed Flash Loader software which was programmed into Flash before shipping
- If necessary, erase the Flash memory using command "X"
- Start the download using command "L"
- Send the S-Record file (OC-Console command "Transfer")

- Now the program is being loaded into Flash. During this process, an increasing number of handshake characters becomes visible. After reception of an S9 line, the program will be started
- To restart the program (after reset) either type "G" or close the AUTO jumper (JP2). Note: the user program must start at address \$8000 in this case.

We hope you will enjoy working with the HC08 Welcome Kit!

3. Circuit Description

Schematic Diagram

The schematic diagram of the HC08 Welcome Kit is available as a separate document to ensure optimum visibility of all details.

Controller Core and Input/Output

The Microcontroller HC908GP32 needs only a few external components. Many peripheral functions, such as SCI, Analog/Digital-Converter and 32 KB of Flash Memory, are integrated on-chip. The HC908GP32 is offered in several packages. The HC08 Welcome Kit uses the 44-pin, QFP version of the 68HC908. This package has four more I/O pins than the DIP40 version.

The operating voltage for the HC08 Welcome Kit is 5V, though the MCU can operate down to 3V (see data sheet for details).

The reset system of the HC08 is different from other Motorola Microcontrollers (HC11, HC12). For example, the capacitor C6 on the reset pin of this circuit could never be used in an HC11 system. The HC908GP32 has an integrated LVI (low voltage inhibit) circuit, so an external reset controller is not required.

As an optical indicator, a LED is connected to port pin PTC2. A driver circuit is not required because this port pin has a drive capability of up to 25mA.

The I/O pins of the microcontroller are accessible on the expansion connectors X4 and X5. When connecting any external components, the requirements to activate the Monitor Mode should be considered (see below).

Clock Generation

The oscillator IC3 generates a frequency of 9.8304 MHz. This clock is delivered to the OSC1 input of the microcontroller. The solder bridge BR4 must be open in this mode. The external clock from IC3 is required for Monitor Mode operation (programming, debugging via MON08), but can also be used for normal operation mode, i.e. running a user program (User Mode).

Alternatively, the PLL module of the HC908GP32 can be used as the clock source. For this purpose, Q1, C1, C2, R1 and R2, together with the circuitry in the controller, form a Pierce-Oscillator which is generating a 32768 Hz clock. This clock is the input signal for the PLL, which produces the internal bus clock (up to 8 MHz). The parts R3, C3 and C4 form a filter combination for the PLL. In order to activate the PLL mode, the "canned" oscillator IC3 must be removed and solder bridge BR4 must be closed.

The HC08 Welcome Kit is shipped with the High-Speed Flash Loader FL08 residing in Flash memory. FL08 uses the PLL to generate a bus clock of 7.3728 MHz.

To utilize the PLL, some initialization steps are required. Please refer to the HC908GP32 data book for a comprehensive discussion of the PLL functions. For your convenience, a setup example is provided in the "Application Hints" section of this manual.

Monitor Mode Interface

For the purpose of Flash programming and software debugging, the HC908GP32 makes use of a special operating mode named "Monitor Mode". The difference between the Monitor Mode and the normal User Mode, is that firmware in the GP32's internal ROM is executed instead of the user's program. At first, this firmware examines a set of I/O pins which are used to select some operating parameters. Finally, this firmware establishes an asynchronous serial interface function on the port pin PTA0. This interface works bidirectionally (half duplex) and corresponds to the usual RS232 conventions. The baud rate is 9600 Baud. Besides the appropriate clock (9.8304 MHz), a number of port

pins must be connected to certain logic levels, as summarized in the following table:

Port	Level
PTA0	H
PTA7	L
PTC0	H
PTC1	L
PTC3	L

Monitor Mode Levels on Ports A and C

The monitor mode interface circuit on the evaluation board produces these levels using five pull up or pull down resistors.

Apart from the above requirements it is further necessary to supply the /IRQ pin of the microcontroller with a higher voltage (in the range of approx. 7 to 10V) to enter Monitor Mode. This voltage is generated by the charge pump of the RS232 transceiver (IC2) and limited to 8.2V using the Zener diode D4. JP1 (MON) must be set, in order to apply this higher voltage to /IRQ.

The connection of the Monitor Mode interface to the PC is made via X2. A ribbon cable with a 10-pin female header connector at the device end and a 9-pin Sub-D connector at the PC end can be used.

The pinout scheme of the cable is shown in the following table:

X2 Pin	USB08 MONI	PC RS232	Sub-D9 Pin
3	T1OUT	RxD	2
5	R1IN	TxD	3
9	GND	GND	5

Pin configuration of the Monitor Mode cable

User RS232 Port

In contrast to the serial Monitor Mode interface, the user RS232 port incorporates separate send and receive lines. The HC908GP32 has a SCI hardware module for asynchronous serial communication, the related pin names being TXD (send) and RXD (receive).

X3 is the user RS232 port connector. For a connection to a PC, the same kind of cable is used as for the monitor mode connection. The solder bridges BR1 and BR2 on the solder side of the PCB have to be set to position 1-2. In this configuration, the PC works as a host, the HC08 Welcome Kit board represents the device side.

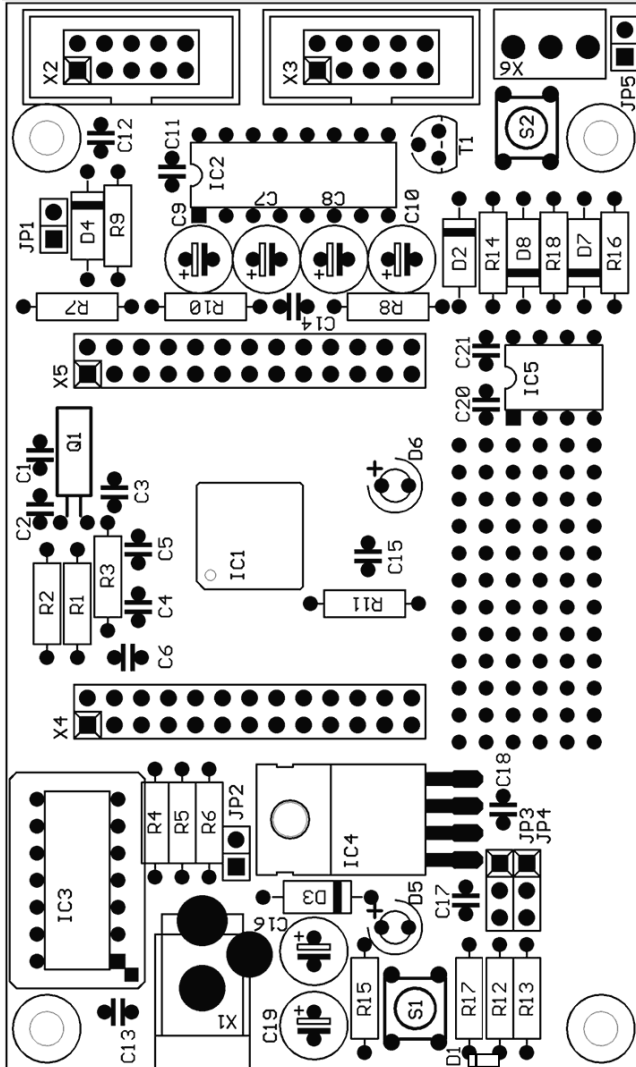
The reverse case happens if a serial LC display is to be operated at the user RS232 port. In this configuration, the HC08 Welcome Kit board is the host and the LCD module represents the device side. The necessary RxD/TxD crossing can be done externally or by setting the solder bridges BR1/BR2 to position 2-3. At the same time, the serial LCD can be supplied with operating voltage by closing solder bridge BR3 (Note: this option is a deviation from the standard RS232 connector layout!). Serial alphanumeric LC displays are offered by several vendors. We particularly recommend LC displays from Matrix Orbital (see <http://www.matrix-orbital.com>).

Power Supply

Voltage regulator IC4 supplies 5V to the board from a DC voltage of between 8 and 12V supplied to the power input connector X1.

IC4 is rated for up to 1 ampere and thus should be more than adequate even with no special cooling measures taken. The load current of the board is well less than 100mA.

4. Parts Location Diagram



Parts List

Reference	Value	Type
C1, C2	22pF	Ceramic Cap
C3	33nF	Ceramic Cap
C4	10nF	Ceramic Cap
C5..C15, C17, C18, C20, C21	100nF	Ceramic Cap
C16	100µF/25V	Electrolytic Cap
C19	10µF/16V	Electrolytic Cap
D1, D2	BAT42	Schottky Diode
D3	1N4001	Rectifier
D4	BZX83 8.2V	Zener Diode
D5, D6	LED 3mm	LED
T1	BS170	N-channel MOSFET
Q1	32768 Hz	Crystal Quartz
JP1, JP2	Hdr. 2x1	Jumpers
JP3, JP4	Hdr. 3x1	Jumpers
R1	10M	Resistor
R2	330k	Resistor
R3..R8, R13	10k	Resistor
R9	2.2k	Resistor
R10	10R	Resistor
R11, R15	330R	Resistor
R12, R17	33k	Resistor
R14	100k	Resistor
S1	DTS62R	Push Button Switch
X1	KLBR2	Power Jack Conn.
X2, X3	Hdr. 2x5	Header Connector

X4, X5	Hdr. 2x13	Header Connector
IC1	MC68HC908GP32CFB	MCU
IC2	SP232A	RS232 Transceiver
IC3	9.8304 MHz	Oscillator DIP
IC4	KA78R05	Voltage Regulator
IC5	NE555	Timer IC

5. Jumpers and Solder Bridges

Jumpers

JP1:	MON (Monitor Mode)
open*	User Mode (user program or FL08 Flash Loader)
closed	Monitor Mode (programming/debugging via MON08)
JP2:	AUTO (Autostart)
open*	start Flash Loader FL08
closed	after Reset, FL08 immediately branches to address \$8000 to execute user program
JP3:	VENA (Voltage Enable)
1-2*	standard control mode for IC4
2-3	reserved for LIN option
JP4:	RRST (Remote Reset)
1-2*	enable Remote Reset via serial /DTR line
2-3	disable Remote Reset

Solder Bridges

BR1, BR2:	RS232 TxD/RxD Select
1-2*	RS232 configured as "Device" (for connection to a PC etc.)
2-3	RS232 configured as "Host" (for connection to a serial LCD etc.)

BR3: LCD Power Supply (SER1)

- open* VCC not available on RS232 port
(standard Sub-D connector layout)
- closed VCC available on RS232 port
(at Pin 9 of the Sub-D connector)

BR4: OSC

- open external Oscillator IC3 delivers clock
(required for Monitor Mode)
- closed* Clock generation by 32 kHz crystal and PLL
(remove IC3 in this case!)

BR5: OSC

- open reserved for LIN option
- closed* Controller pin RxD is connected with RS232
transceiver IC2

* = Factory Default Setting

6. Connectors

Power Supply Connector X1

- + inside
- outside

Monitor Mode Connector X2

n.c.	1	2	n.c.
PC_RxD	3	4	n.c.
PC_TxD	5	6	n.c.
n.c.	7	8	n.c.
GND	9	10	n.c.

X2

User RS232 Connector X3

n.c.	1	2	n.c.
Rx (Tx)	3	4	n.c.
Tx (Rx)	5	6	n.c.
n.c.	7	8	(VCC)
GND	9	10	n.c.

X3

Expansion Connector X4

VCC	1	2	VCC
GND	3	4	/RST
PTC0	5	6	PTC1
PTC2	7	8	PTC3
PTC4	9	10	PTC5
PTC6	11	12	n.c.
TXD	13	14	RXD
GND	15	16	/IRQ
/SS	17	18	MISO
MOSI	19	20	SPSCK
T1CH0	21	22	T1CH1
T2CH0	23	24	T2CH1
GND	25	26	GND

X4

Expansion Connector X5

VCC	1	2	VCC
GND	3	4	n.c.
n.c.	5	6	n.c.
PTA7	7	8	PTA6
PTA5	9	10	PTA4
PTA3	11	12	PTA2
PTA1	13	14	PTA0
GND	15	16	VDDAD
PTB7	17	18	PTB6
PTB5	19	20	PTB4
PTB3	21	22	PTB2
PTB1	23	24	PTB0
GND	25	26	GND

X5

7. Memory Map

From	To	Size	Usage
0x0000	0x003F	64 Byte	Control Registers
0x0040	0x023F	512 Byte	RAM
0x0240	0x7FFF		reserved
0x8000	0xEFFF	28672 Byte	Flash Memory, 28 KB free for user application
0xF000	0xFDFF	3584 Byte	Flash Memory, 3.5 KB used by Flash Loader FL08
0xFE00	0xFFDB		Control Registers and Monitor ROM Code
0xFFDC	0xFFFF	36 Byte	Interrupt Vector Table (Flash)

Memory Map of the HC908GP32 (with FL08)

For details about the Memory Map of the Microcontroller and information on addresses of Control Registers and Interrupt Vectors, please see the Motorola Data Book **MC68HC908GP32 Technical Data**.

8. Application Hints

In this section some details will be given on how to program the HC908GP32 in general and the HC08 Welcome Kit in particular.

Please be aware that, even if this manual can provide some specific hints, it is impossible to cover all kinds of knowledge and techniques required to design a microcontroller program. Please refer to the data sheets of the silicon vendors and to the manuals of the software tools you use to find additional help.

Startup-Code

Every microcontroller program starts with a number of hardware initialization commands. For an HC908GP32 application program, only a small number of issues are important:

- setting the Stack Pointer
- selecting the proper base clock for the SCI (if used)
- disabling (or using) the COP Watchdog timer

The following assembly language sequence shows an example:

```
entry    ldhx  #$00ff          ; Program Entry Point
         txs   ; Init Stack Pointer
         mov   #$01,CONFIG2    ; SCI uses Bus Clock
         mov   #$01,CONFIG1    ; Disable Watchdog
```

PLL Initialization

A user program can use the PLL to generate the bus clock. In this case, the program must take care to properly initialize the PLL module.

The following program listing shows an example of how to initialize a system with a bus clock rate of 7.3728 MHz (as used by FL08):

PCTL	EQU	\$36
PBWC	EQU	\$37
PMSH	EQU	\$38
PMSL	EQU	\$39
PMRS	EQU	\$3A
PMDS	EQU	\$3B

BCS	EQU	4
PLLON	EQU	5
LOCK	EQU	6
AUTO	EQU	7

INITPLL	BCLR	BCS,PCTL	;Select external Clock
	BCLR	PLLON,PCTL	;Turn PLL off
	MOV	#\$02,PCTL	;P=0, E=2
	MOV	#\$01,PMDS	;R=1
	MOV	#\$03,PMSH	;N=900
	MOV	#\$84,PMSL	
	MOV	#\$C0,PMRS	;L=192
	LDA	PCTL	;clear PLLF
	BSET	AUTO,PBWC	;Automatic bandwidth control
	BSET	PLLON,PCTL	;Turn PLL on
W4LOCK	BRCLR	LOCK,PBWC,W4LOCK	;Wait for lock
	BSET	BCS,PCTL	;Select PLL Clock

Additional Information on the Web

Additional information about hard- and software of the HC08 Welcome Kit will be published on our Website, as it becomes available:
http://www.elektronikladen.de/en_kit08.html

HC08 Development Tools

Motorola provides free development tools for the HC08 microcontrollers (assembler, programmer, debugger, etc.). Please check the following Web links:

<http://www.motorola.com/mcu/>
<http://www.pemicro.com/ics08/>