

inDART[®] - HCS08
In-Circuit
Debugger/Programmer
for Freescale HCS08 Family
FLASH Devices

User's Manual
Rev. 2.0



Copyright © 2006 SofTec Microsystems®

DC01028

We want your feedback!

SofTec Microsystems is always on the look-out for new ways to improve its Products and Services. For this reason feedback, comments, suggestions or criticisms, however small, are always welcome.

SofTec Microsystems

E-mail (general information): info@softecmicro.com

E-mail (marketing department): marketing@softecmicro.com

E-mail (technical support): support@softecmicro.com

Web: <http://www.softecmicro.com>

Important

SofTec Microsystems reserves the right to make improvements to the inDART® Series In-Circuit Debuggers, their documentation and software routines, without notice. Information in this manual is intended to be accurate and reliable. However, SofTec Microsystems assumes no responsibility for its use; nor for any infringements of rights of third parties which may result from its use.

SOFTEC MICROSYSTEMS WILL NOT BE LIABLE FOR DAMAGES RESULTING FROM LOSS OF DATA, PROFITS, USE OF PRODUCTS, OR INCIDENTAL OR CONSEQUENTIAL DAMAGES, EVEN IF ADVISED OF THE POSSIBILITY THEREOF.

Trademarks

SofTec Microsystems is a registered trademark of SofTec Microsystems, Spa.

FreescallTM and the Freescall logo are trademarks of Freescall Semiconductor, Inc.

Microsoft and Windows are trademarks or registered trademarks of Microsoft Corporation.

PC is a registered trademark of International Business Machines Corporation.

Other products and company names listed are trademarks or trade names of their respective companies.

Written by Paolo Xausa

Contents

1. Overview	5
What is inDART-HCS08?	5
Background Debug Controller (BDC)	6
CodeWarrior Integrated Development Environment	6
SofTec Microsystems DataBlaze Programming Utility	7
Demo Boards	7
Recommended Reading	7
Software Upgrades	8
2. Getting Started	9
inDART-HCS08 Components	9
Host System Requirements	10
Installing the Software	11
<i>Installing the CodeWarrior IDE</i>	11
<i>Installing SofTec Microsystems Additional Components</i>	11
Installing the Hardware	12
Application Tutorial	14
3. inDART-HCS08 Operations	19
inDART-HCS08 Working Principles	19
Configuring a Debugging Session	19
<i>Creating Your Own Application</i>	19
<i>MCU Configuration</i>	20
<i>Communication Settings</i>	20
Breakpoints and Trace	21
Using Existing Projects with inDART-HCS08	22
Notes and Tips	23
<i>Entering Debug Session with CodeWarrior</i>	23
<i>Reading Peripheral Status</i>	23
<i>Breakpoints and BGND Instruction</i>	23
<i>Real-Time Memory Update</i>	23
DataBlaze Programming Utility	24
<i>DataBlaze Notes</i>	25

4. Troubleshooting	27
Common Problems and Solutions	27
<i>Communication Can't Be Established with inDART-HCS08</i>	27
<i>Stepping Execution is Slow</i>	28
<i>STOP Assembly Instruction Causes a Microcontroller Reset</i>	28
<i>Communication Lost During Debugging</i>	28
Diagnostic Test	28
Getting Technical Support	29
Appendix A. Electrical and Physical Specifications	31

1. Overview

What is inDART-HCS08?

inDART-HCS08 is a powerful entry-level tool for Freescale HCS08-based systems. inDART-HCS08 takes advantage of the CodeWarrior HC(S)08 Integrated Development Environment and the BDC (Background Debug Controller) feature to debug the user program. Together with CodeWarrior HC(S)08, inDART-HCS08 provides you with everything you need to compile, download (program), in-circuit emulate and debug user code. Full speed program execution allows you to perform hardware and software testing in real time. inDART-HCS08 is connected to the host PC through a USB port, while the 6-pin BDM connector of the product fits into the target's standard BDM connector. Design Kit packages also include a full-featured experiment board for a specific HCS12 microcontroller.

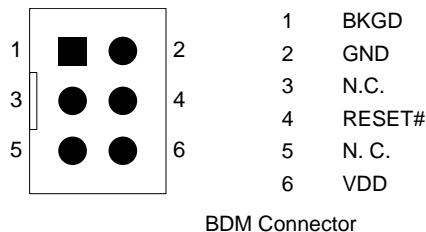
inDART-HCS08 offers you the following benefits:

- Real-time code execution without probes—works with all packages (BDM-compatible connector);
- In-circuit debugging;
- Built-in FLASH programmer (DataBlaze programming utility);
- 1.8 to 5.5 V devices supported;
- Standard chip used—no bondouts, 100% electrical characteristics guaranteed;
- Working frequency up to the microcontroller's maximum;
- Jumperless hardware mode setting;
- Automatic target frequency detection;
- Hardware self diagnostic test;
- USB connection to the PC;
- CodeWarrior IDE (the same user interface of all Freescale tools), with editor, assembler, C compiler and debugger.

Background Debug Controller (BDC)

All MCUs in the HCS08 family contain a single-wire background debug interface which supports in-circuit programming of on-chip non-volatile memory and sophisticated non-intrusive debug capabilities. This system does not interfere with normal application resources. It does not use any user memory or locations in the memory map and does not share any on-chip peripherals.

The background debug controller (BDC) uses a single-wire communication interface to allow non-intrusive access to target system memory and registers. inDART-HCS08 uses the standard, 6-pin BDM connector defined by Freescale to program and debug the target device. You must therefore provide such connector (see the diagram below) on your target board.



- **BKGD:** Single-wire background interface pin. This signal is required.
- **GND:** System ground. This signal is required.
- **RESET#:** Reset signal to target system. This signal is optional but it's useful during debugging.
- **VDD:** Power supply voltage from target. This signal is required by inDART-HCS08 signal conditioning.

CodeWarrior Integrated Development Environment

inDART-HCS08 comes with a free version of CodeWarrior Development Studio for HC(S)08 Microcontrollers, Special Edition.

CodeWarrior Development Studio for HC(S)08 is a powerful and easy-to-use tool suite designed to increase your software development productivity. Its

Integrated Development Environment (IDE) provides unrivaled features such as Processor Expert application design tool, full chip simulation, Data Visualization and project manager with templates to help you concentrate on the added value of your application.

The comprehensive, highly visual CodeWarrior Development Studio for Freescale HC(S)08 Microcontrollers enables you to build and deploy HC(S) 08 systems quickly and easily. This tool suite provides the capabilities required by every engineer in the development cycle, from board bring-up to firmware development to final application development.

To use the Special Edition, you must have a valid license key. Without the license key the product will run in a 1 KB code-size limited demonstration mode.

To request the license key, please refer to Metrowerks website.

This documentation covers the basic setup and operation of the CodeWarrior IDE, but does not cover all of its functions. For further information, please refer to the CodeWarrior on-line help and online documentation provided.

SofTec Microsystems DataBlaze Programming Utility

The SofTec Microsystems “**System Software**” CD-ROM contains the DataBlaze programming utility targeted to the inDART-HCS08 board.

DataBlaze is a full-featured programming utility which offers a complete set of programming features like memory editing, blank check/erase/verify operations and read/write operations.

Demo Boards

Design Kit packages include a full-featured, microcontroller-specific experiment board. The demo board can be used for evaluation/experiments in the absence of a target application board.

Recommended Reading

This documentation describes how to use inDART-HCS08 together with the CodeWarrior HC(S)08 IDE and DataBlaze programming environment. Additional information can be found in the following documents:

- **Evaluation Board-Specific Information**—If you bought a Design Kit, additional documentation which explains the evaluation board's details is available under **Start > Programs > SofTec Microsystems > inDART-HCS08 > User's Manuals**.
- **CodeWarrior Additional Documentation**— Available from the CodeWarrior IDE.
- **Freescale HCS08 Datasheets**—Include detailed information on the devices' background debug controller (BDC).

Software Upgrades

The latest version of the inDART-HCS08 system software is always available free of charge from website: <http://www.softecmicro.com>. CodeWarrior upgrades can be found at <http://www.metrowerks.com>.

2. Getting Started

2

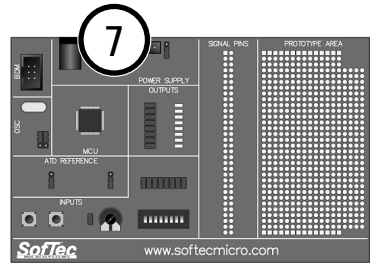
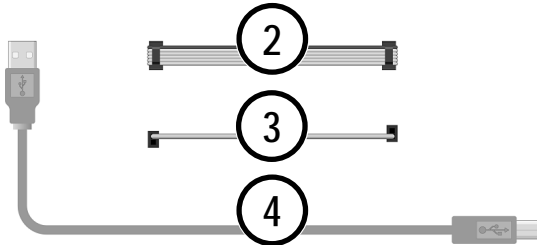
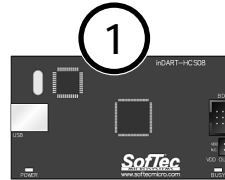
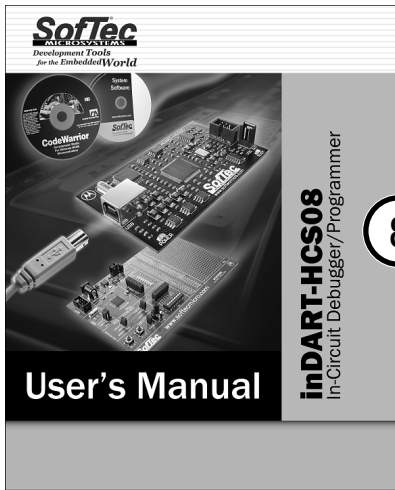
inDART-HCS08 Components

The inDART-HCS08 package includes the following items:

1. The inDART-HCS08 in-circuit debugger/programmer unit;
2. A 20-cm, 6-conductor BDM cable;
3. A 30-cm, 1-conductor “VDD OUT” cable;
4. A USB cable;
5. The CodeWarrior HC(S)08 CD-ROM;
6. The SofTec Microsystems inDART-HCS08 “System Software” CD-ROM;
7. A full-featured, microcontroller-specific experiment board (Design Kit packages only);
8. This user’s manual.

2. Getting Started

2



inDART-HCS08 Components

Host System Requirements

The inDART-HCS08 in-circuit debugger is controlled by an Integrated Development Environment running under Windows (CodeWarrior HC(S)08). The following hardware and software are required to run the CodeWarrior HC(S)08 user interface together with inDART-HCS08:

1. A 133-MHz (or higher) PC compatible system running Windows 98, Windows 2000 or Windows XP;
2. 128 MB of available system RAM plus 500 MB of available hard disk space;
3. A USB port;

4. CD-ROM drive for installation.

Installing the Software

2

inDART-HCS08 requires that both the CodeWarrior IDE and SofTec Microsystems inDART-HCS08 additional components be installed in the host PC.

Note: *the CodeWarrior HC(S)08 IDE must be installed first. Please note that inDART-HCS08 only works with CodeWarrior for HC(S)08 version 3.0 or above.*

Installing the CodeWarrior IDE

To install the CodeWarrior IDE insert the CodeWarrior CD-ROM into your computer's CD-ROM drive. A startup window will automatically appear. Follow the on-screen instructions.

Installing SofTec Microsystems Additional Components

SofTec Microsystems additional components install all of the other required components to your hard drive. These components include:

- The inDART-HCS08 USB driver;
- inDART-HCS08 software plug-in for CodeWarrior HC(S)08;
- Sample source code for SofTec Microsystems evaluation boards;
- SofTec Microsystems DataBlaze programming utility;
- inDART –HCS08 hardware diagnostic test utility;
- Documentation in PDF format.

To install SofTec Microsystems additional components insert the SofTec Microsystems “**System Software**” CD-ROM into your computer's CD-ROM drive. A startup window will automatically appear. Choose “**Install Instrument Software**” from the main menu. A list of available software will

appear. Click on the **“inDART-HCS08 Additional Components”** option. Follow the on-screen instructions.

Note: *if you are installing the inDART-HCS08 additional components on Windows 2000 or Windows XP you must have logged in as Administrator.*

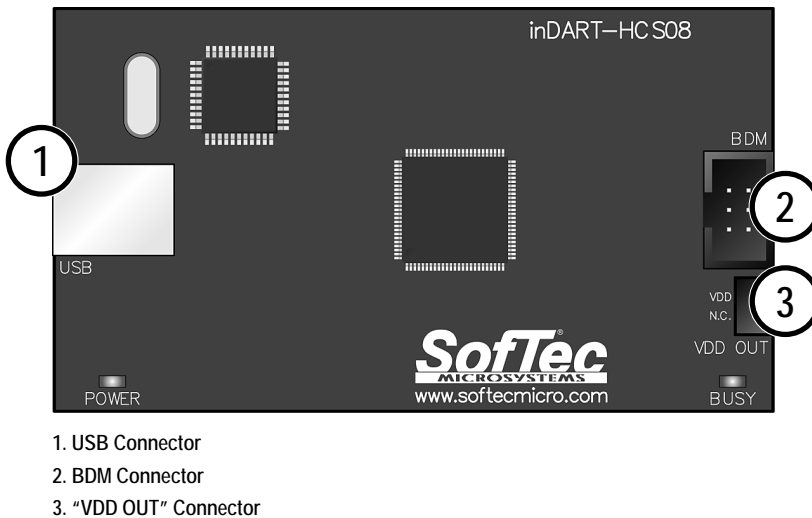
Installing the Hardware

The inDART-HCS08 in-circuit debugger is connected through a USB port to a host PC. Connection steps are listed below in the recommended flow order:

1. Install all the required system software as described in the previous section.
2. Insert one end of the USB cable into a free USB port.
3. Insert the other end of the USB cable into the “USB” connector on the inDART-HCS08 board. The green “POWER” LED on the instrument should turn on. Windows will automatically recognize the instrument and will load the appropriate USB driver.
4. Insert one end of the BDM cable into the 6-way “BDM” connector on the inDART-HCS08 board.
5. Insert the other end of the BDM cable into the BDM connector of the demo board or target application.
6. Power the demo board or target application. When using a SofTec Microsystems demo board, there are two power options:
 - a. **Power the board via the “UNREG. VDD” connector:** The “UNREG. VDD” connector accepts 9-12 V DC, 200-mA wall plug-in power supply with a 2.1 mm pin and sleeve plug with positive in the center and sleeve as ground. When powering the board through this connector, make sure the “VDD SOURCE” jumper selects the “UNREG.” position. The “UNREG. VDD” voltage is internally regulated to the microcontroller’s operating voltage (3.0 V DC in the case of the MC9S08GB60).

- b. **Power the board via the “REG. VDD” connector:** The “REG. VDD” connector accepts a voltage up to the microcontroller’s operating voltage (3.3 V DC in the case of the MC9S08GB60). When powering the board through this connector, make sure the “VDD SOURCE” jumper selects the “REG.” position. The “REG. VDD” voltage directly powers the microcontroller and the rest of the board. The “REG. VDD” connector has been designed to be used together with inDART-HCS08’s “VDD OUT” connector: the “VDD OUT” cable can be conveniently inserted into the “VDD OUT” connector on the inDART-HCS08 board and into the “REG. VDD” connector on the demo board. This way inDART-HCS08 powers the demo board.

Please refer to the following figure to get an overview of the inDART-HCS08 unit.



The inDART-HCS08 Unit

2

Note: both Windows 2000 and Windows XP may issue a warning the first time inDART-HCS08 is connected to the PC. This warning is related to the fact that the USB driver used by inDART-HCS08 is not digitally signed by Microsoft, and Windows considers it to be potentially malfunctioning or dangerous for the system. However, you can safely ignore the warning, since every kind of compatibility/security test has been carried out by SofTec Microsystems. Additionally, under Windows XP, the “Found New Hardware Wizard” procedure may occur twice.

Application Tutorial

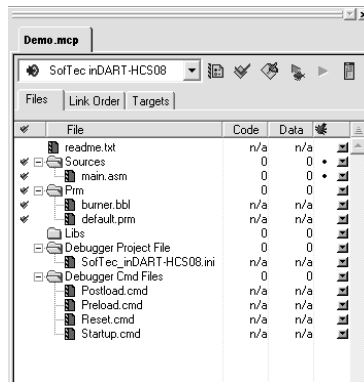
This section will provide a step-by-step guide on how to launch your first inDART-HCS08 project and get started with the CodeWarrior HC(S)08 user interface.

Note: the example provided assumes that inDART-HCS08 is used with the IDB-HCS08GB demo board. If you have a different demo board, some procedures may differ slightly. This tutorial is based on an Assembly example. Additional examples in C are also provided. For evaluation board-specific features, please refer to the evaluation boards’ PDF manuals installed by SofTec Microsystems additional components.

The sample application does the following:

- By rotating the potentiometer, you affect the results of the A/D conversion, and the value of each conversion is displayed on the LEDs;
 - By pressing the PTC5 push button, the DIP-switches status is displayed on the LEDs.
1. Ensure that the inDART-HCS08 board is connected to the PC (via the USB cable) and that the demo board is powered on via the “REG. VDD”

- connector (the “VDD OUT” cable must be connected and the “VDD SOURCE” jumper must select the “REG.” option).
2. Ensure that the inDART-HCS08 board is connected to the demo board via the BDM connector.
 3. Make sure that all of the evaluation board’s jumpers are set to their factory position.
 4. Start the CodeWarrior HC(S)08 IDE by selecting **Start > Programs > Metrowerks CodeWarrior > CW08 > CodeWarrior IDE**. The CodeWarrior HC(S)08 IDE will open.
 5. From the main menu, choose **File > Open**. Select the “**Demo.mcp**” workspace file that is located under the “**\Program Files\Metrowerks\CodeWarrior CW08\ (CodeWarrior_Examples)\HCS08\SofTec Microsystems\inDART-HCS08\IDB-HCS08GB\Asm\Demo**” directory. Click “**Open**”. The following window will appear.



The Project Window

6. The Assembly code of this example is contained in the “**main.asm**” file. Double click on it to open it. The following window will appear.

2. Getting Started

2



```
main.asm
Path: C:\Program Files\Metrowerks\CodeWarrior\CW08_V3.0\CodeWarrior_Examples\HCS08\SoftTec Microsystems\inD...main.asm

; *****
; MAIN ASM
; *****
; Copyright (c) 2003 SoftTec Microsystems
; http://www.softtec-micro.com/
; *****

; ADC Sample for SoftTec Microsystems IDB-HCS08GB Demo Board

; - By rotating the potentiometer (PTB0 channel 0), you affect the results of
;   the A/D conversion, and the value of each conversion is displayed on the
;   LEDs on PTF[7..0].
; - By pressing the PTC5 push button, the DIP-switches status on PTA[7..0] is
;   displayed on the LEDs on PTF[7..0].

; Make sure that all of the "LED ENABLE" jumpers, the "SW ENABLE" jumpers, the
; "POTENTIOMETER ENABLE" jumper and the "ATD REFERENCE" jumpers are all in their
; default position.
; *****

; XDEF Entry, main
; *****
; Peripheral registers definition
; *****
PTAD EQU $0000      ; Port A data register
PTCD EQU $0008      ; Port C data register
PTCPE EQU $0009      ; Port C pull-up enable register
PTFD EQU $0040      ; Port F data register
PTFDD EQU $0043      ; Port F data direction register
ATDC EQU $0050      ; ATD control register
ATSDC EQU $0051      ; ATD status and control register
ATDPE EQU $0054      ; ATD pin enable register
ATDRH EQU $0052      ; ATD result register (high)
ATDRL EQU $0053      ; ATD result register (low)
SRS EQU $1800      ; SIM reset status register
; *****

DEFAULT_ROM SECTION
; *****
; Peripheral Initialization
; *****

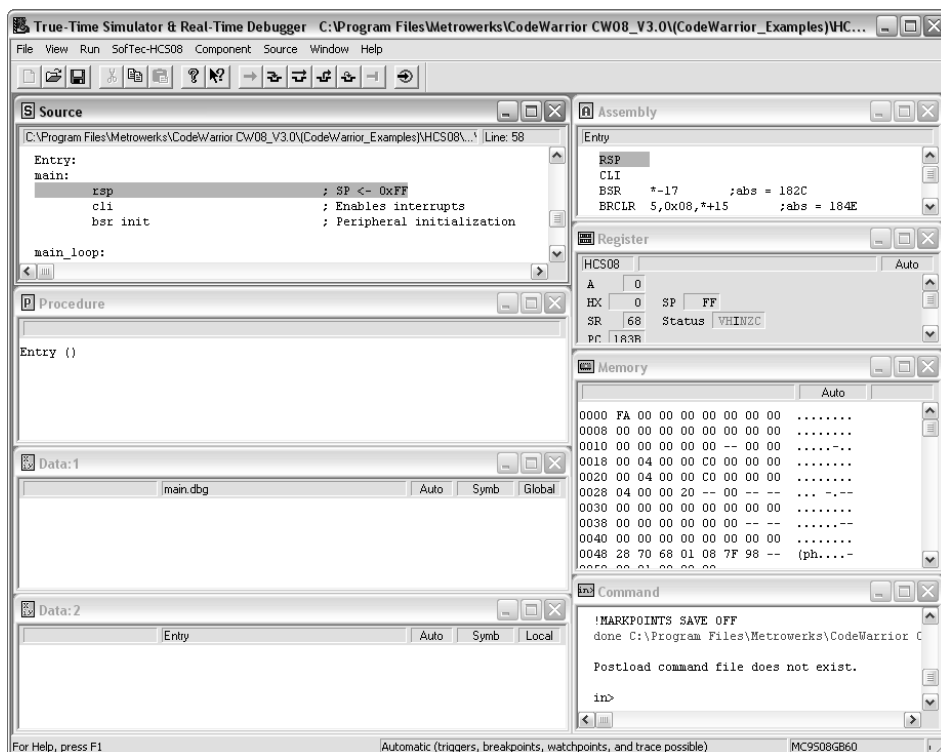
init:
    bset 5, PTCPE      ; Enables port C5 internal pull-ups
    mov #3FF, PTFDD     ; Configures port F[7..0] as output
    mov #5AE, ATDC      ; ATD cn, 8-bit, left justified, unsigned, PRESC / 64
    mov #501, ATDPE     ; Enables ADC pin 0
    mov #520, ATSDC     ; Selects input channel 0, continuous conversion mode

    rts

Line 16 Col 19
```

The Example's Source Code

7. From the main menu, choose **Project > Debug**. This will generate an executable file and will download it to the demo board.
8. A new debugger environment will open. In the *Source* window, the first line to be executed is highlighted.



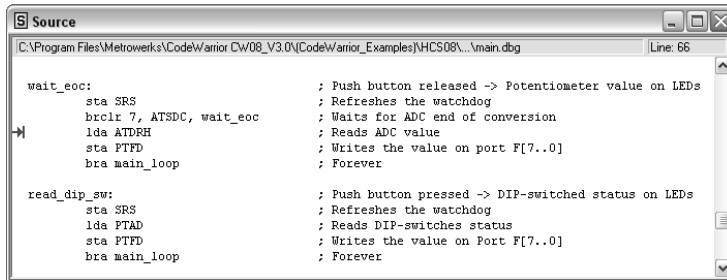
Debugging Session Started

9. From the main menu, choose **Run > Start/Continue**. The program will be executed in real-time. Please note that the "BUSY" LED on the inDART-HCS08 unit turns on. By rotating the potentiometer on the demo board, you affect the results of the A/D conversion, and the value of each conversion is displayed on the LEDs.
10. From the main menu, choose **Run > Halt**. The program execution will stop. The next instruction to be executed is highlighted in the *Source* window.
11. From the main menu, choose **Run > Single Step**. The instruction highlighted in the *Source* window will be executed, and the program execution will be stopped immediately after.

2. Getting Started

2

12. In the *Source* window, insert a breakpoint at the “**lda ATDRH**” instruction in the **main_loop** subroutine. To insert the breakpoint, right-click on the “**lda ATDRH**” line and, from the pop-up menu, select “**Set Breakpoint**”.



Breakpoint Set

13. Rotate the potentiometer slightly. Then, from the main menu, choose **Run > Start/Continue**. The application will restart from where it was previously stopped. The application will stop at the breakpoint location as soon as the next A/D conversion is done.
14. From the main menu, choose **Run > Single Step**. The “**lda ATDRH**” instruction will be executed. In the *Registers* window, you can see how that instruction affected the value contained on the Accumulator. This value is the result of the A/D conversion.
15. Issue another Single Step command (**Run > Single Step**). The Accumulator value will be displayed on the LEDs.

Congratulations! You have successfully completed this tutorial! You can continue to experiment with the CodeWarrior user interface and discover by yourself its potentialities. For an in-depth guide of all of the user interface features, select **Help > CodeWarrior Help** or **Help > Online Manuals** from the CodeWarrior HC(S)08 IDE's main menu.

3. inDART-HCS08 Operations

inDART-HCS08 Working Principles

inDART-HCS08 is an in-circuit debugger as well as a programming tool. It programs files into the HCS08 microcontrollers and offers debugging features like real-time code execution, stepping, advanced breakpoints and trace buffer. Its debugging features are achieved thanks to the microcontroller's integrated Background Debug Controller (BDC).

The BDC peripheral communicates with the inDART-HCS08 board through a single-wire dedicated line of the microcontroller. The same line is also used during device programming.

Contrariwise to traditional in-circuit emulation (where the target application is executed and emulated inside the emulator), inDART-HCS08 uses the very same target microcontroller to carry on in-circuit execution. This means that all microcontroller's peripherals (timers, A/D converters, I/O pins, etc.) are not reconstructed or simulated by an external device, but are the very same target microcontroller's peripherals. Moreover, the inDART-HCS08 debugging approach ensures that the target microcontroller's electrical characteristics (pull-ups, low-voltage operations, I/O thresholds, etc.) are 100% guaranteed.

Configuring a Debugging Session

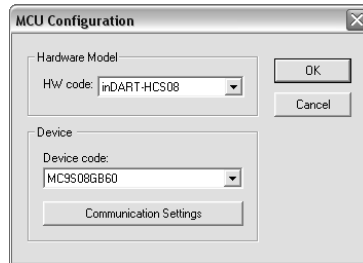
Creating Your Own Application

CodeWarrior HC(S)08 helps you get started with your own application by including a project wizard specific for the inDART-HCS08 board. To create a new inDART-HCS08 project:

1. From the main menu, select **File > New**.
2. A dialog box will appear. Select **"HC(S)08 New Project Wizard"**.
3. Follow the Project Wizard steps, making sure you select the correct microcontroller derivative you are working with and the inDART-HCS08 board as emulator.

MCU Configuration

The first time you start the debugging of your application (with the command **Project > Debug**), the *MCU Configuration* dialog box will appear, allowing you to select the hardware model and the target microcontroller you are working with.



The *MCU Configuration* Dialog Box

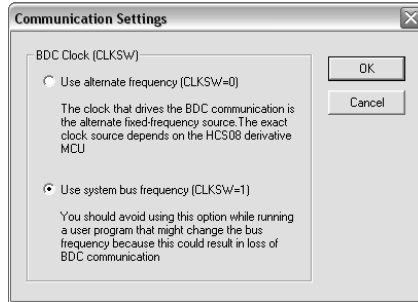
First, ensure that the “**Hardware Model**” parameter is set to “**inDART-HCS08**”. Then, set the “**Device Code**” parameter to the specific target microcontroller you are working with. Additional communication parameters can be specified by clicking the “**Communication Settings**” button.

Communication Settings

The BDC communication speed depends on a clock source which, in turn, is selected by the CLKSW bit in the Status register. If the CLKSW bit is set to 1, the BDC communication clock source is the microcontroller’s bus frequency; if the CLKSW bit is set to 0, the BDC communication clock source is a constant clock source, which can vary depending on the specific HCS08 derivative. In the case of the MC9S08GB60, for example, this constant clock source is a 8 MHz internal clock. Other derivatives may use the external crystal frequency.

Which CLKSW setting to use depends on the target system and on the user application. The idea is to set the CLKSW bit so that the highest (and less subject to changes) clock frequency is used for the BDC communication. A low clock frequency will result in slow BDC communication (and therefore slow debugging and slow programming), while a clock frequency which changes frequently (as in the case of the user application modifying the FLL peripheral) may result in loss of BDC communication.

The value of the CLKSW can be changed in the *Communication Settings* dialog box.



The *Communication Settings* Dialog Box

3

Breakpoints and Trace

CodeWarrior offers a variety of tools for analyzing the program flow: breakpoints (both simple and complex), watchpoints and a trace buffer. All these features are implemented by taking advantage of the target microcontroller's DBG peripheral.

To access breakpoints, watchpoints and trace buffer settings, open the *Trigger Module Settings* dialog box by choosing the **SofTec-HCS08 > Trigger Module Settings** menu while in debug.

When setting an instruction breakpoint, CodeWarrior does the following:

1. If available, uses the hardware address breakpoint built into the BDC module;
2. Otherwise, if possible, sets one hardware breakpoint using the DBG peripheral;
3. If no hardware breakpoints are available in the DBG peripheral (or if the trigger mode is not set to "Automatic"), a warning message is displayed, and the instruction breakpoint will not be set.

Note: *when setting an instruction breakpoint on a RAM location, a software breakpoint is set (the opcode present at that location is automatically replaced by the **BGND** Assembly instruction). Therefore, no hardware breakpoints are wasted.*

Note: *the Single Step command (in a C source code) and the Step Over and Step Out commands (both in a C and Assembly source code) use one hardware breakpoint.*

Using Existing Projects with inDART-HCS08

If your project has been targeted to an emulator/simulator other than inDART-HCS08 and you wish to use inDART-HCS08 as the debugger for your project, please do the following:

1. CodeWarrior is interfaced to the inDART-HCS08 engine through a so-called “GDI interface”. From the CodeWarrior HC(S)08 debugger interface, select **Component > Set Target** and choose “**HCS08**” as processor and “**GDI Target Interface**” as target interface.
2. A dialog box will appear asking you to locate the GDI dll file needed to interface with inDART-HCS08. Select the **SofTec_BDC08.dll** file located into the **\Program Files\Metrowerks\CodeWarrior CW08\prog** directory.
3. CodeWarrior will then recognize inDART-HCS08 as the target interface for your project. The *MCU Configuration* dialog box will appear allowing you to select the derivative you are working with.
4. On the CodeWarrior HC(S)08 debugger interface a new menu (**SofTec-HCS08**) will be created. From this menu, select **Load** and locate the object file your project is based on.

Notes and Tips

Entering Debug Session with CodeWarrior

When entering a debug session, the target microcontroller's FLASH memory is automatically erased, unsecured, programmed with the user application, and the trimming value (if trimming is available for the selected microcontroller) is automatically calculated and programmed (to the location suggested by Freescale).

Note: *When programming the microcontroller with the user application (after having unsecured the device), CodeWarrior ignores (doesn't program) the security bits. As a result, when entering a debug session, the device is always unsecured, regardless of other user settings.*

Reading Peripheral Status

Care must be taken when reading some peripheral's status/data registers, since a reading operation may cause the clearing of flags. This may happen when the *Memory* window or the *Data* window is open, since these windows read microcontroller's resources during refresh operations.

Breakpoints and BGND Instruction

The BGND Assembly instruction forces the target microcontroller to enter the Active Background Debug mode, stopping program execution. CodeWarrior recognizes this event as a breakpoint and updates the contents of registers, memory, etc. Successive commands (Start/Continue, Single Step, etc.) will continue the execution of the program from the next instruction.

Real-Time Memory Update

During program execution, it is possible to view/edit the contents of the *Memory* window and *Data* window in real time (edit operations are only available for RAM locations). For example, it is possible to set the periodical refresh of the *Memory* window contents by choosing **Mode > Periodical** from the pop-up menu which appears by right-clicking on the *Memory* window.

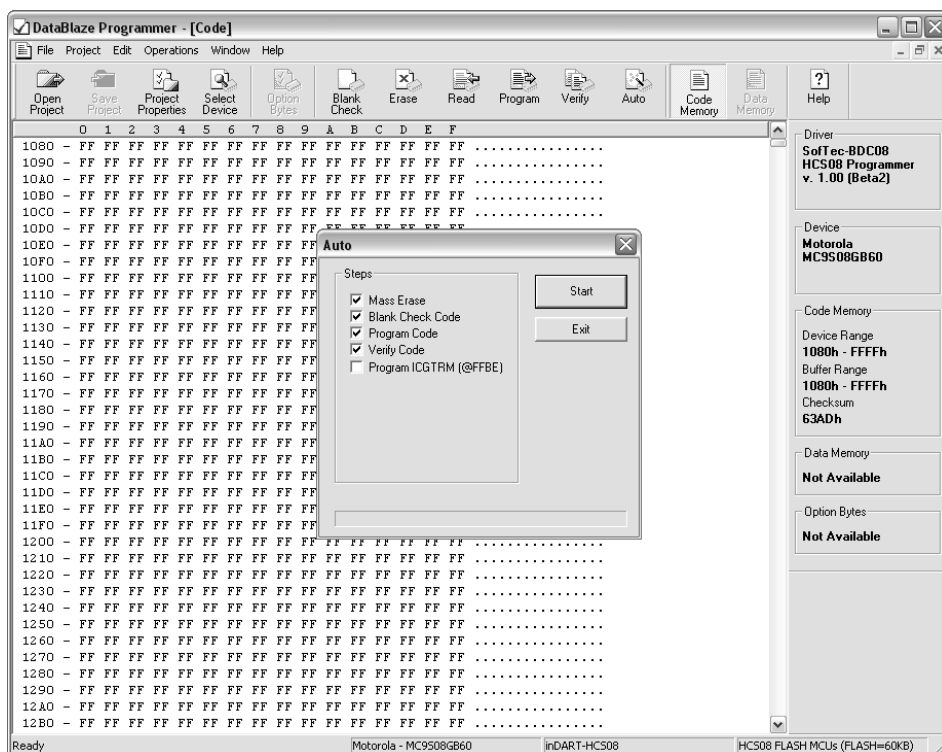
DataBlaze Programming Utility

A full-featured programming utility (DataBlaze) is also provided with inDART-HCS08. To start the DataBlaze utility select **Start > Programs > SofTec Microsystems > inDART-HCS08 > DataBlaze Programmer**.

DataBlaze offers the following advanced features:

3

- Code memory editing;
- Data memory (EEPROM) editing;
- Blank check/erase/program/verify operations on Code memory and Data memory;
- Read operations from Code memory and Data memory;
- Project handling;
- One-button, multiple-operations programming (“Auto” feature);
- Automatic trimming calibration;
- Serial numbering.



3

The DataBlaze User Interface

DataBlaze Notes

- The “Mass Erase” operation always blanks the device (even if the device is protected or secured) and “unsecures” the device (the NVOPT FLASH register is programmed with 0xFE).
- The “Blank Check” operation doesn’t blank check the NVOPT FLASH register.
- The “Program” operation automatically verifies the programmed data, by reading back the programmed data and checking it against the buffer sent to the target device. The “Verify” operation is much more secure (but slower), since it reads back the programmed data and checks it against the data buffer present in the host PC.

- In case of programming error, please verify that the NVOPT FLASH register is programmed with a value different from 0xFF.
- The “Read”, “Program” and “Verify” operations are performed (when possible) by setting the target microcontroller’s FLL peripheral so that the maximum BDC communication speed is achieved.
- On all devices which support the trimming calibration, the FLASH location suggested by Freescale where to store the trimming value is reserved by DataBlaze. DataBlaze automatically calculates the trimming value and writes it to that location.

4. Troubleshooting

Common Problems and Solutions

This section reports some common problems that may arise during general use. However, working with a specific target device may cause device-specific issues.

Communication Can't Be Established with inDART-HCS08

1. Make sure the inDART-HCS08 in-circuit debugger is connected to the PC and powered on. inDART-HCS08 is powered by the USB connection.
2. Make sure you are working with the correct inDART hardware model. To view/change the inDART hardware model in use, choose **inDART-HCS08 > MCU Configuration** the CodeWarrior HC(S)08 debugger's main menu.
3. If the **inDART-HCS08** menu is not present in the CodeWarrior HC(S)08 debugger's main menu, this is because the target has not been recognized by CodeWarrior ("No link to Target" appears in the status bar). In this case, you must do the following:
 - From the **GDI** menu, choose **MCU Configuration** and verify that the hardware code and device code parameters are set correctly.
 - Press the "**Communication Settings**" button and verify that all of the communication parameters are set correctly.
4. Make sure the demo board/target application board is powered on and the target microcontroller is working. Programming and debugging rely on a BDM communication between the inDART-HCS08 board and the demo board/target application. This means that, in order to work correctly, the target microcontroller must be running. In particular, make sure that:
 - The BDM cable is connected to the demo board/target application's BDM connector.
 - All of the required BDM connector signals are correctly tied to the target microcontroller.

4

Stepping Execution is Slow

When the *Memory* window is open, step commands may execute slower, since the *Memory* window contents need to be refreshed after every step.

STOP Assembly Instruction Causes a Microcontroller Reset

If the STOPE bit in the SOPT register is not set, the STOP instruction is recognized as an illegal opcode, causing the microcontroller to reset. The SOPT register can be written only once after reset.

4

Communication Lost During Debugging

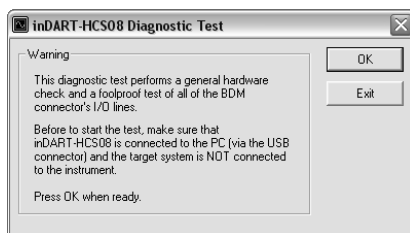
This problem may have several causes:

1. The microcontroller's bus frequency has been changed by the user application and the CLKSW bit is set to 1. In this case, set the CLKSW bit to 0 (in the *Communication Settings* dialog box).
2. The BKGDPE bit in the SOPT (System Option Register) register has been set to 0, configuring the BKGD pin as a generic I/O pin. The BKGD pin must be reserved for the BDC communication (BKGDPE = 1).
3. A microcontroller reset has occurred. Among other things, this may be caused by the COP peripheral. After reset, the COP is enabled, so your program must either disable it or reset its timer.

Diagnostic Test

inDART-HCS08 has built-in self-test capabilities. This means that you can verify by yourself, at any time, the correct operation of the instrument's hardware. The diagnostic test is accessible through a small, separate test utility. To perform the diagnostic test:

1. Start the inDART-HCS08 diagnostic test utility by selecting **Start > Programs > SofTec Microsystems > inDART-HCS08 > inDART-HCS08 Diagnostic Test**. The following dialog box will appear.



The *inDART-HCS08 Diagnostic Test* Utility

2. Make sure that inDART-HCS08 is connected to the host PC;
3. Make sure that no target system is connected to inDART-HCS08;
4. Click **“OK”**. The test will be performed. In case of problems, please contact our technical support.

4

Getting Technical Support

Technical assistance is provided free to all customers. For technical assistance, documentation and information about products and services, please refer to your local SofTec Microsystems partner.

SofTec Microsystems offers its customers a free technical support service at support@softecmicro.com. Before getting in contact with us, we advise you firstly to visit our online FAQ section and to be sure you are working with the latest version of the inDART-HCS08 user interface (upgrades are available free of charge at <http://www.softecmicro.com/download.html>).

Appendix A. Electrical and Physical Specifications

Operating Voltage	4.75 to 5.0 V DC (provided by the USB connection)
Operating Current	300 mA (max)
V_{DD} (Voltage Supplied by the V_{DD} Line on the “VDD OUT” Connector)	3.0 V or 5.0 V
I_{DD} (Current Drawn by the Target via the V_{DD} Line on the “VDD OUT” Connector)	100 mA (max)
Dimensions	95 x 55 x 15 mm
Weight	25 g
Operating Temperature	0 °C to 50 °C
Storage Temperature	-20 °C to 70 °C
Humidity	90% (without condensation)

Electrical and Physical Specifications



