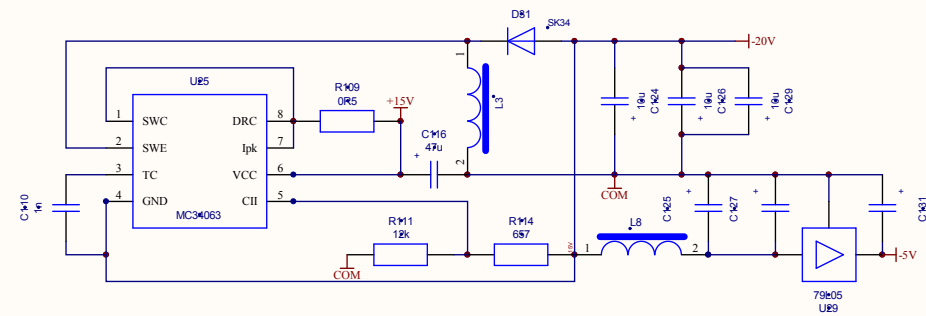
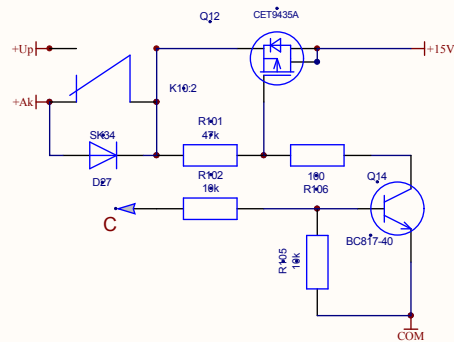
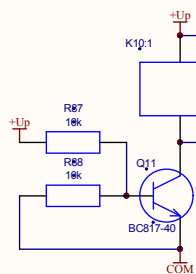
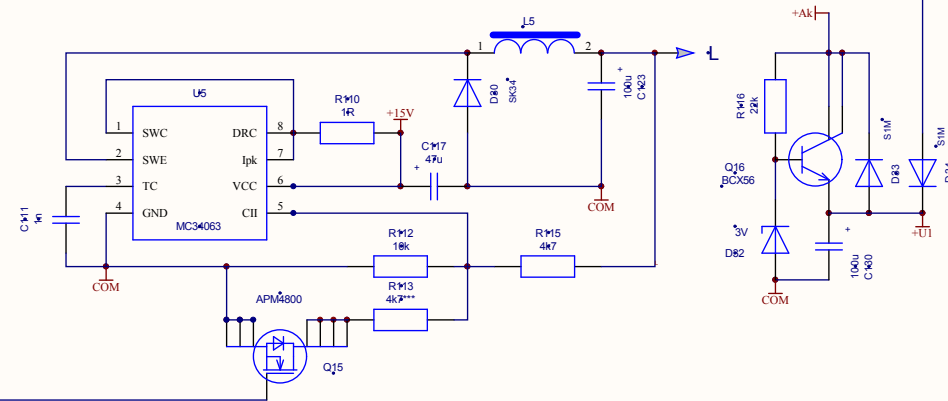
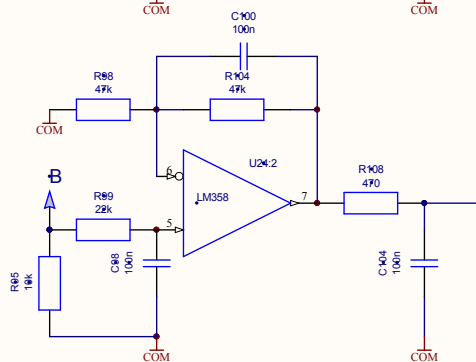
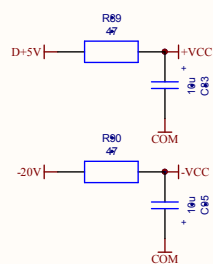
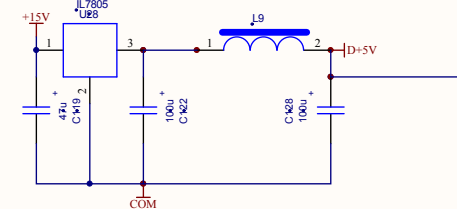
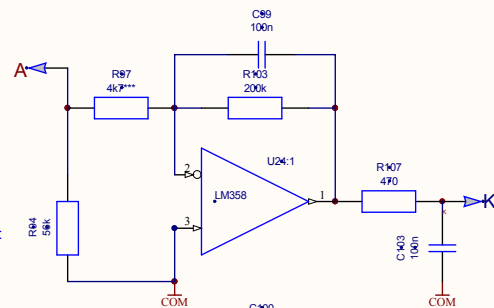
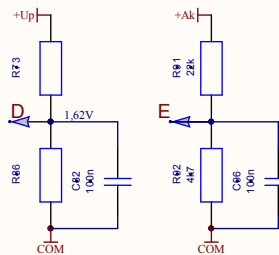


J18:1 ← COM
 J18:2 ←
 J18:3 ←
 J18:4 ← C
 J18:5 ← D
 J18:6 ← +UI
 J18:7 ← E
 J18:8 ← COM



12. ОСНОВНА ПЛАТА

J19:1* ← | A+3,3V
J19:2* ← | A+5V
J19:3* ← | COM
J19:4* ← | -5V
J19:5* ← | COM
J19:6* ← | D+5V
J19:7* ← | → K
J19:8* ← | → L
J19:9* ← | → A
J19:10* ← | → B



Title			
Size A3	Number		Revision
Date:	03.10.2009	Sheet of	
File:	H:\MI PROJECT\Sheet3.SchDoc	Drawn By:	

Bill of Materials			<Parameter Title not found>		
Source Data From: J1PRJPCB					
Project: J1PRJPCB					
Variant: None					
Creation Date: 20.10.2009 17:06:05					
Print Date: 2009 40989.71299					
Footnote	Comment	Label	Designator	Description	Quantity
1206_1206U		1206	C1, C2, C3, C5, C8, C81, C82, C86, C89	1206, MLT-0126	57
		1206_VARIANT	C36, C100, C103, C104, C110, C111, R1		
		1, MLT-0126	R2, R6, R7, R8, R11, R12, R17, R19, R42		
			R73, R86, R87, R88, R89, R90, R91, R92, R93, R94, R95, R96, R97, R98, R99, R100, R101, R102, R103, R104, R105, R106, R107, R108, R109		
0805_0805U		0805	C4, C6, C7, C9, C10, C17, C18, C21, C22, C26, C29, C32, C33, C34, C35, C37, C38, C39, C40, C41, C42, C43, C45, C53, C54, C55, C56, C57, C58, C59, C66, C68, C70, C71, C72, C75, C77, C78, C79, C84, C85, N6, N9, R10, R13, R14, R15, R	0805, 1206, DMP2.5	87
		0805_VARIANT	C26, C35, C36, C37, C38, C39, C40, C41, C42, C43, C45, C53, C54, C55, C56, C57, C58, C59, C66, C68, C70, C71, C72, C75, C77, C78, C79, C84, C85, N6, N9, R10, R13, R14, R15, R		
		1, 1206, DMP2.5	C37, C38, C39, C40, C41, C42, C43, C45, C53, C54, C55, C56, C57, C58, C59, C66, C68, C70, C71, C72, C75, C77, C78, C79, C84, C85, N6, N9, R10, R13, R14, R15, R		
R15H_R15H	Cap	R15H	C11, C12, C13, C14, C15, C16	R15H	6
C8D5_C-C-47.0K16V(T)	Cap_pol	C8D5	C20, C25, C26, C31		4
			C44, C47, C52		
				C-47.0K16V(T)	
D6_3_D6.3	D6.3	D6.3	C36, C37, C101, C102, C105, C106, C108, C109, C110, C112, C113, C114, C115, C116, C117, C118, C119, C120, C121, C122, C123, C128, C130, C131	D6.3	24
D5_D5U	D5	D5	C5, C9	D5	2
D5_100n	Cap	D5_VARIANT	C21, C22, C23, C24		4
		Cap	C21, C22, C23, C24		
728X4_728X4	728X4	728X4	CV1, CV2, CV3, CV4, CV5	728X4	5
DO35_1N4148	1N4148	1N4148	D1	1N4148	1
DO35_1N4148	1N4148	1N4148	D2, D3, D4, D5, D6, D7, D8, D9, D10, D11, D12	1N4148	11
SOT23_BAV99	BAV99	BAV99	D13	BAV99	1
DL41_S1M1	S1M	S1M	D25	S1M	1
9K34_9K34	9K34	9K34	D27, D29	9K34	2
9K34_9K34	9K34	9K34_VARIANT	D28, D30, D31	9K34	3
		1			
MINIMELF_8	82V55-88V6	82V55-88V6	D32	82V55-88V6	1
		C255-88V6U			
DL41_S1M1	S1M_VARIANT	S1M_VARIANT	D33, D34	S1M	2
		1,			
CH2_CH2U	CH2	CH2	D1, D3, D5	CH2, CH4, PAD1	3
CH8_CH8U	CH8	CH8	D2, D18	CH8	2
CH4_CH4U	CH4	CH4	D4	CH4	2
PAD1_PAD1	PAD1	PAD1	D6, D7, D14, D15, D16, D17	PAD1	1
IOC10_IOC10	IOC10	IOC10	D8, D9	IOC10	2
IOC20_IOC20	IOC20	IOC20	D19	IOC20	1
CH10_CH10	CH10	CH10	D19	CH10	1
JRC_JRC	JRC-22FS	JRC-22FS	K1, K2, K3, K4, K5, K6, K7, K8, K9	JRC-22FS	5
22FS_22FS	22FS	22FS	K1, K2, K3, K4, K5, K6, K7, K8, K9	JRC-22FS	5
FTR_B4GA4.5Z_F	FTR	FTR	K10	FTR-B4GA4.5Z	1
B4GA4.5ZU	H_DR1_12.5	H_DR1_12.5	C1, L3, L5	H_DR1_12.5	3
H_DR_TORU	DR_5	DR_5	D3, L6, L7, L8, L9	DR_5	5
SMA_DR_5U	SOT23_BC8	SOT23_BC8	D1, Q2, Q11, Q14	BC817-40	7
		7-40			
SOT23_BC8	BC817-40	BC817-40	D3, D4, Q7, Q8, Q9, Q10, Q13	BC817-40	4
7-40U	KP303	KP303	D5, D6	KP303	2
KP303_KP303	CET9435A	CET9435A	D12	CET9435A	1
SOT223_C8	APM4800	APM4800	D15	APM4800	1
SOT189_BCX	BCX56	BCX56	D16	BCX56	1
MLT-0125	MLT-0125	MLT-0125	R3	MLT-0125	1
MLT-0125	MLT-0125	MLT-0125	R4	MLT-0125	1
TSSOT_1N41	VAR	VAR	R24, RV1	VAR	1
0805		Resistor	R21, R22, R23, R26, R27, R28, R29, R41, R42, R44, R45, R46, R47, R48, R49, R50, R51, R52, R53, R54, R55, R56, R57, R58, R59, R60, R61		28
PEC12_PEC12		PEC12	S1, S2, S3, S4, S5, S6	PEC12	6
KNOPKA_T12		KNOPKA_T12	S7, S8, S9, S10, S11, S12, S13, S14, S15, S16, S17, S18, S19, S20, S21	KNOPKA_T12	10
ATMEGA8-16P	ATMEGA8-16P	ATMEGA8-16P	U1	ATMEGA8-16P TOFP32	1
TOFP32	XTAL	TOFP32	U2	XTAL	1
MC74HC4052	AD8803	MC74HC4052	U3, U21	AD8803	2
MC34063	MC34063	MC34063	U5, U22, U25	MC34063	3
AD930	AD930	AD930	U6, U7	AD930	2
MEGA128	MEGA128	MEGA128	U8	MEGA128	1
RU1010-33	RU1010-33	RU1010-33	U9	RU1010-33	1
SOT189_BCX	SOT189_BCX	SOT189_BCX	U10, U21	SOT189_BCX	2
B360APDKAP	B360APDKAP	B360APDKAP	U11	B360APDKAP	1
SOT189_BCX	SOT189_BCX	SOT189_BCX	U12	SOT189_BCX	1
SOT189_BCX	SOT189_BCX	SOT189_BCX	U13	SOT189_BCX	1
SOT189_BCX	SOT189_BCX	SOT189_BCX	U14	SOT189_BCX	1
SOT189_BCX	SOT189_BCX	SOT189_BCX	U15	SOT189_BCX	1
SOT189_BCX	SOT189_BCX	SOT189_BCX	U16	SOT189_BCX	1
SOT189_BCX	SOT189_BCX	SOT189_BCX	U17	SOT189_BCX	1
SOT189_BCX	SOT189_BCX	SOT189_BCX	U18	SOT189_BCX	1
SOT189_BCX	SOT189_BCX	SOT189_BCX	U19	SOT189_BCX	1
SOT189_BCX	SOT189_BCX	SOT189_BCX	U20	SOT189_BCX	1
SOT189_BCX	SOT189_BCX	SOT189_BCX	U21	SOT189_BCX	1
SOT189_BCX	SOT189_BCX	SOT189_BCX	U22	SOT189_BCX	1
SOT189_BCX	SOT189_BCX	SOT189_BCX	U23	SOT189_BCX	1
SOT189_BCX	SOT189_BCX	SOT189_BCX	U24	SOT189_BCX	1
SOT189_BCX	SOT189_BCX	SOT189_BCX	U25	SOT189_BCX	1
SOT189_BCX	SOT189_BCX	SOT189_BCX	U26	SOT189_BCX	1
SOT189_BCX	SOT189_BCX	SOT189_BCX	U27	SOT189_BCX	1
SOT189_BCX	SOT189_BCX	SOT189_BCX	U28	SOT189_BCX	1
SOT189_BCX	SOT189_BCX	SOT189_BCX	U29	SOT189_BCX	1
SOT189_BCX	SOT189_BCX	SOT189_BCX	U30	SOT189_BCX	1
SOT189_BCX	SOT189_BCX	SOT189_BCX	U31	SOT189_BCX	1
SOT189_BCX	SOT189_BCX	SOT189_BCX	U32	SOT189_BCX	1
SOT189_BCX	SOT189_BCX	SOT189_BCX	U33	SOT189_BCX	1
SOT189_BCX	SOT189_BCX	SOT189_BCX	U34	SOT189_BCX	1
SOT189_BCX	SOT189_BCX	SOT189_BCX	U35	SOT189_BCX	1
SOT189_BCX	SOT189_BCX	SOT189_BCX	U36	SOT189_BCX	1
SOT189_BCX	SOT189_BCX	SOT189_BCX	U37	SOT189_BCX	1
SOT189_BCX	SOT189_BCX	SOT189_BCX	U38	SOT189_BCX	1
SOT189_BCX	SOT189_BCX	SOT189_BCX	U39	SOT189_BCX	1
SOT189_BCX	SOT189_BCX	SOT189_BCX	U40	SOT189_BCX	1
SOT189_BCX	SOT189_BCX	SOT189_BCX	U41	SOT189_BCX	1
SOT189_BCX	SOT189_BCX	SOT189_BCX	U42	SOT189_BCX	1
SOT189_BCX	SOT189_BCX	SOT189_BCX	U43	SOT189_BCX	1
SOT189_BCX	SOT189_BCX	SOT189_BCX	U44	SOT189_BCX	1